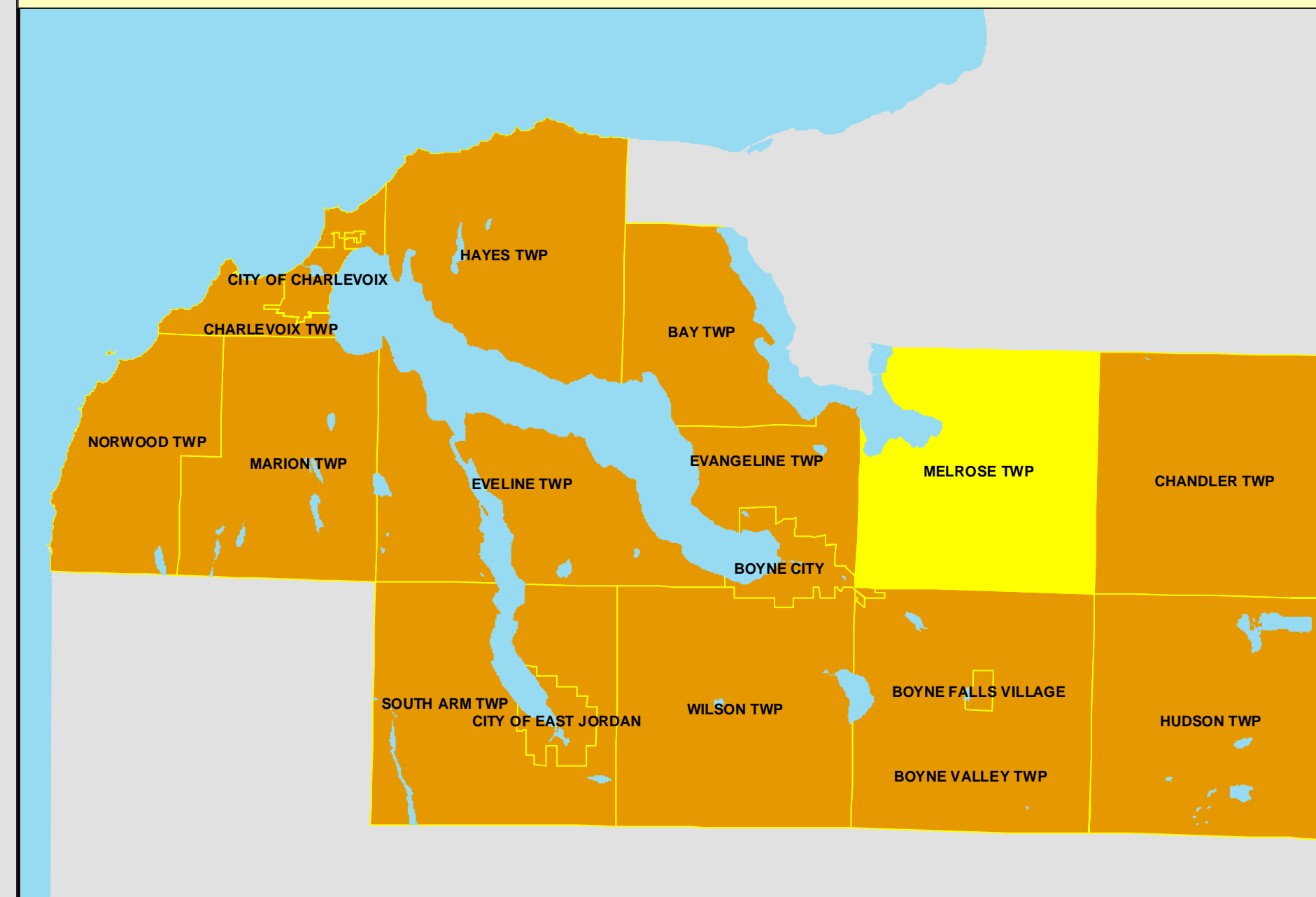


# TOWNSHIP OF MELROSE ZONING MAP REFERENCE CHARLEVOIX COUNTY, MICHIGAN

THE OFFICIAL ZONING MAP OF THE TOWNSHIP  
IS ON DISPLAY AT THE TOWNSHIP HALL



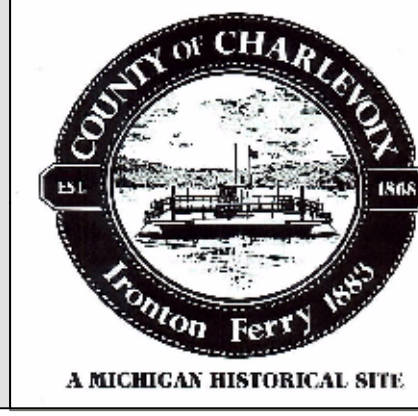
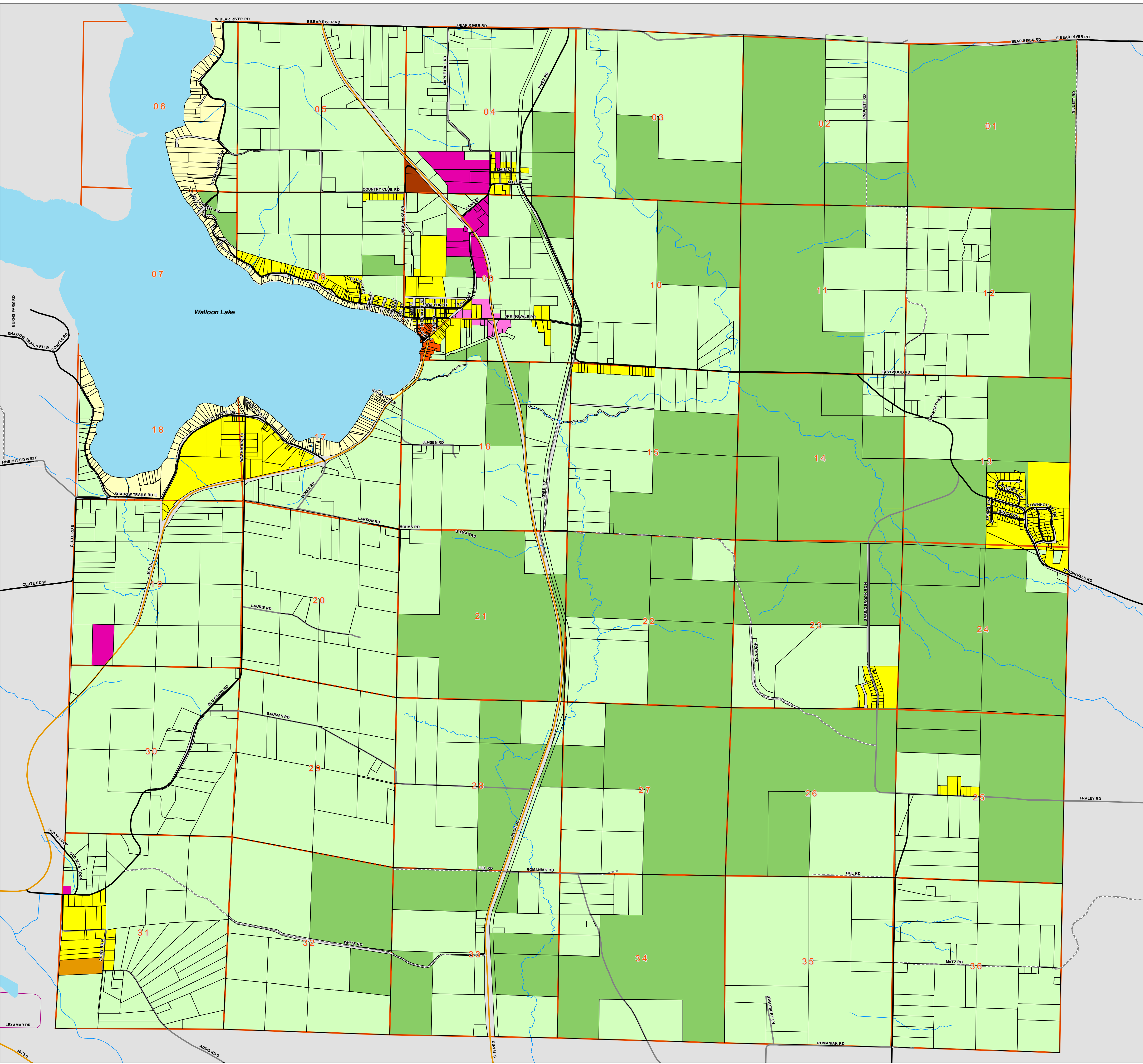
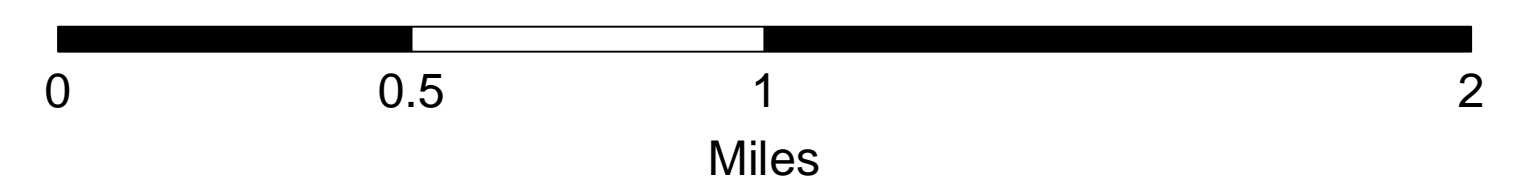
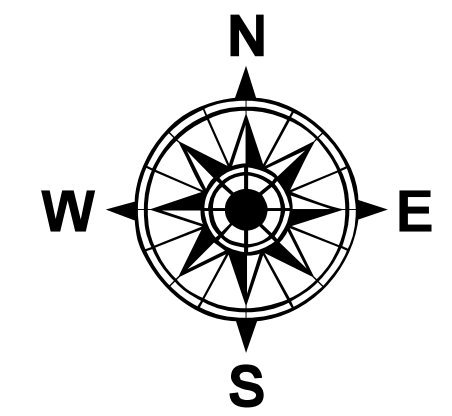
**MAP LEGEND**

**MELROSE ZONING DISTRICTS**

- CR: FOREST CONSERVATION
- A: AGRICULTURAL
- R1: LAKE/STREAM SINGLE FAMILY RESIDENTIAL
- R2: SINGLE FAMILY RESIDENTIAL
- R3: MOBILE HOME PARK RESIDENTIAL
- R4: MULTIPLE FAMILY RESIDENTIAL
- C1: RESORT COMMERCIAL
- C2: HIGHWAY ORIENTED COMMERCIAL
- C3: VILLAGE COMMERCIAL
- MELROSE PARCELS
- SECTION LINES
- LAKES
- ~ RIVERS

**COUNTY TRANSPORTATION ROUTES**

- STATE-FEDERAL HIGHWAYS
- COUNTY PAVED
- - - COUNTY UNPAVED SEASONAL
- ~ COUNTY UNPAVED
- ~ OTHER ACCESS



**CHARLEVOIX COUNTY PLANNING & GIS DEPARTMENTS**  
 CHARLEVOIX COUNTY BUILDING  
 301 STATE STREET  
 CHARLEVOIX, MI 49720  
 WEB SITE: CHARLEVOIXCOUNTY.ORG/GIS.ASP  
 EMAIL: GIS@CHARLEVOIXCOUNTY.ORG  
 PHONE: 231.237.0113

MAP AMENDMENTS THROUGH: 11/20/2004  
 PRINT DATE: 3/03/2005

